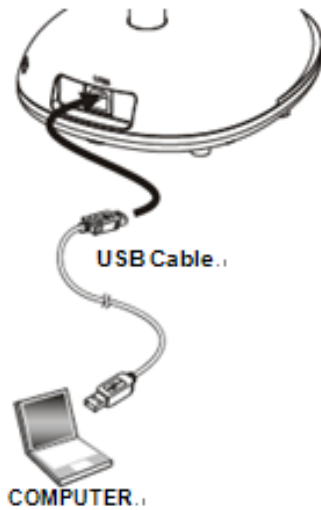


# DC125 Firmware(FW) Update Manual

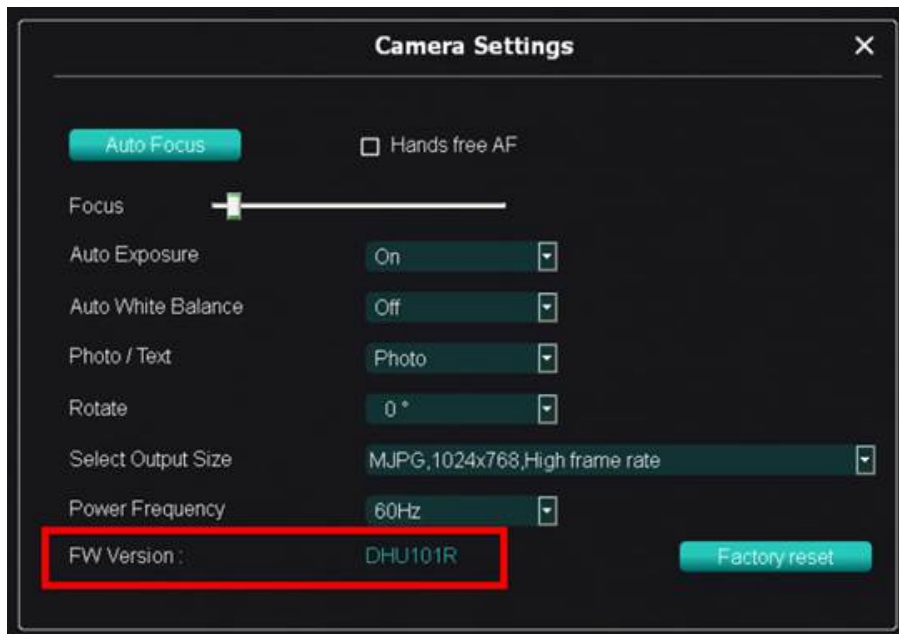
**Before firmware upgrade, please check the original firmware version of unit**

1. Connect DC125 with a PC through USB cable.



2. Check the original FW version of DC125 in [Camera Settings] of Ladibug™.
  - If it's DHU1xx, please download with DHU1xx FW.
  - If it's DHU2xx, please download with DHU2xx FW.
  - If it's DGM1xx, please download with DGM1xx FW.

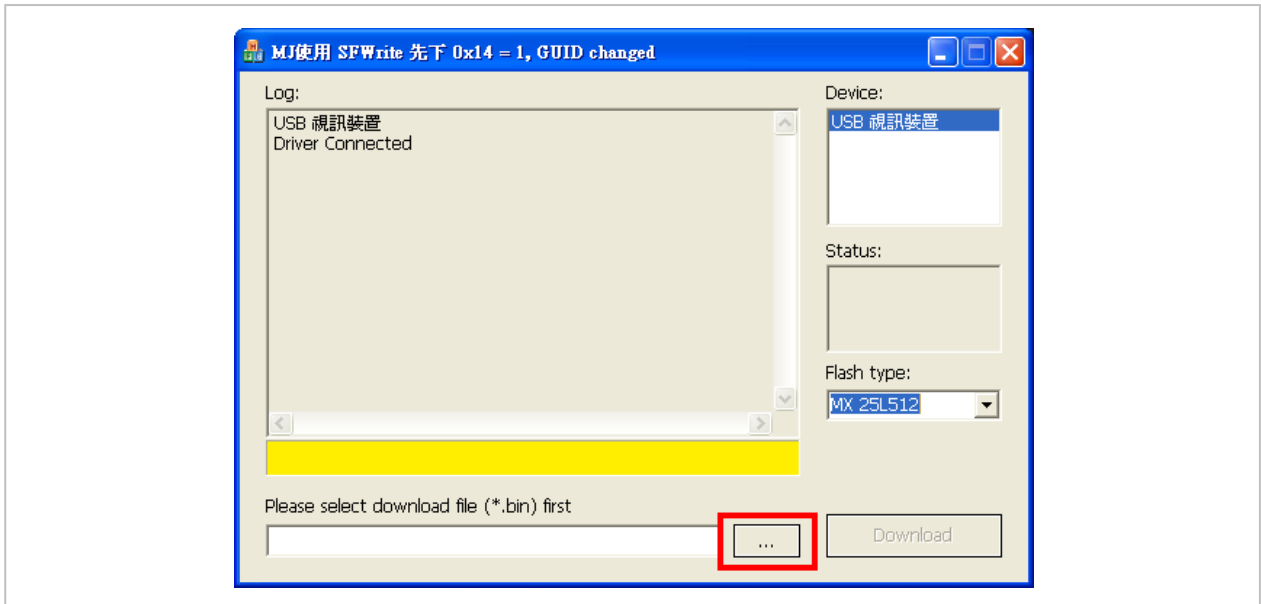
**⚠ Note: Wrong FW download will cause the unit not work.**



### 3. Run the [2088SFWriteTool.exe]



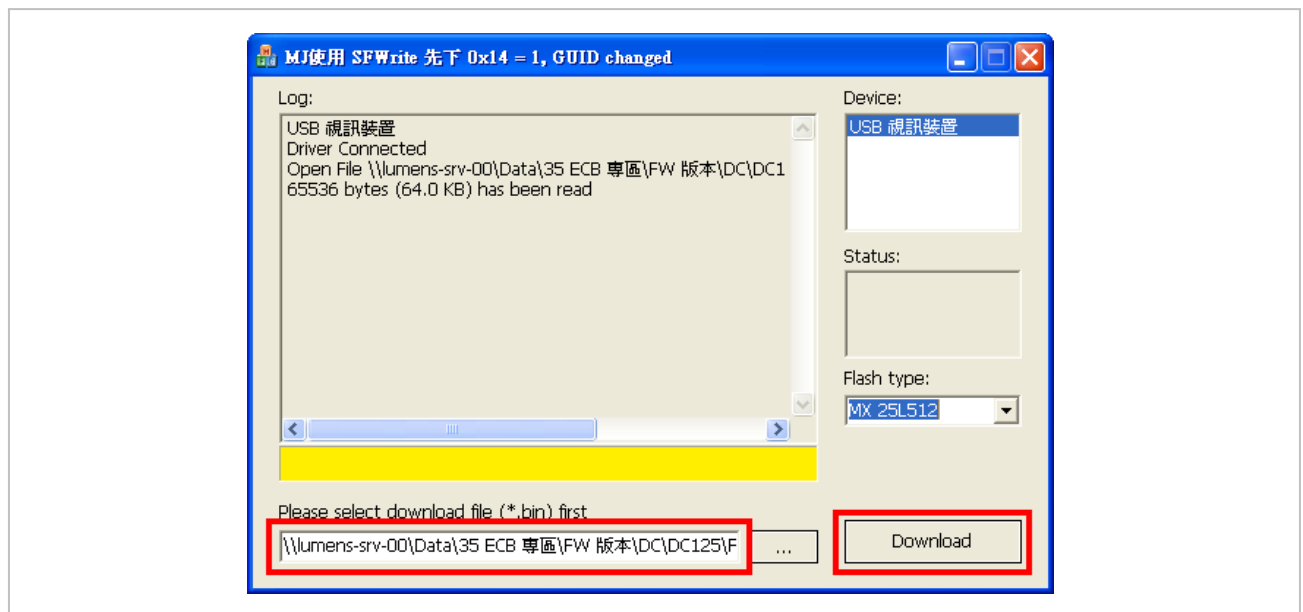
### 4. Press [...] to browse the file and select the .bin file downloaded from website.



### 5. After the .bin file selected, please press [Download] to start the process.

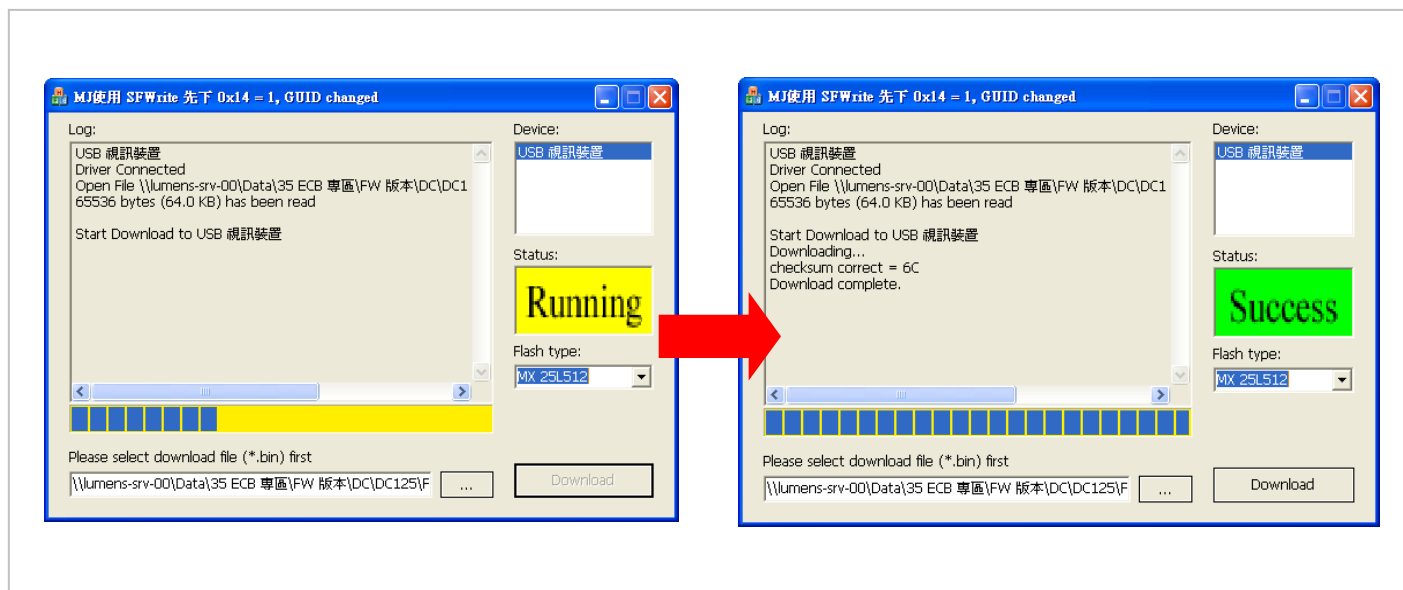
- If original FW version is DHU<sup>1</sup>xx, please download with DHU<sup>1</sup>xx FW.
- If original FW version is DHU<sup>2</sup>xx, please download with DHU<sup>2</sup>xx FW.
- If original FW version is DGM<sup>1</sup>xx, please download with DGM<sup>1</sup>xx FW.

**⚠ Note: Wrong FW download will cause the unit not work.**

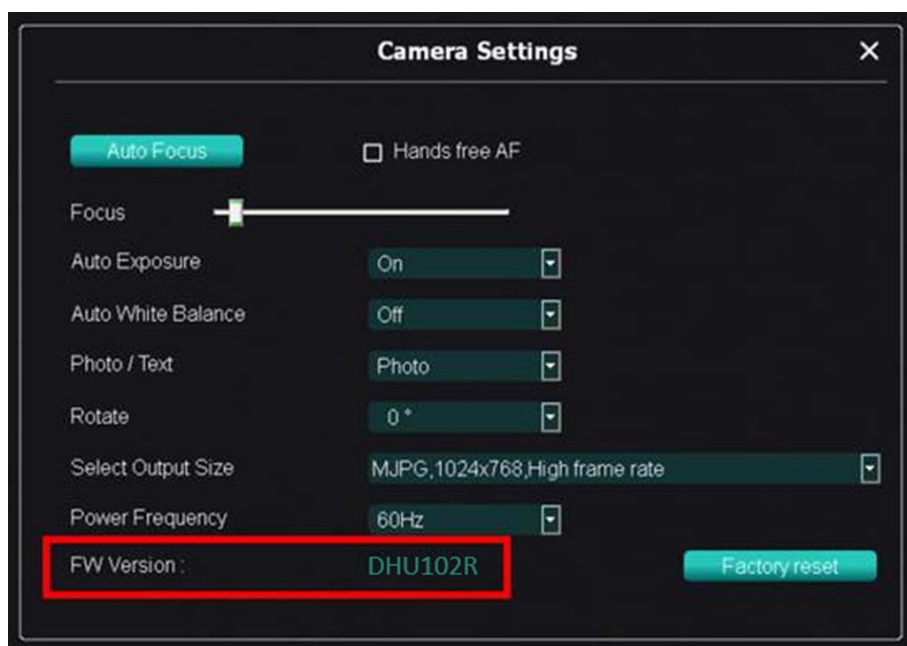


6. When the process is finished, it will show “Success” in the status box, and then you can close the screen.

**\*\*Please do not stop the running process which may cause the unit not work.**



7. Check the FW version in [Camera Setting] of Ladibug™



8. Done.